



# Warm and Inviting

## 4913 Flanders Ave., Kensington, MD

301-946-3900

10140 N Kensington Pkwy, Suite 100  
Kensington, MD 20895

Total Est. Charges (does not reflect Homestead tax credit): \$3,632

Tour this home online at  
[www.FlahertyGroup.com](http://www.FlahertyGroup.com)

### Price Reduced! \$899,900

- Completely renovated
- Gourmet kitchen with cherry cabinets, granite countertops, top appliances
- Hardwood floors on main level, plus upper level landing and master bedroom
- Family room featuring stone gas fireplace
- Master suite with cathedral ceiling and lavish bath with clawfoot tub
- Trex deck overlooking fenced back yard
- Finished basement with large recreation room plus separate guest room and full bath.

#### Cyndy Davis

301-674-8396

[cyndydavis@aol.com](mailto:cyndydavis@aol.com)

#### Mary Twillman

301-325-3174

[mtwillman@verizon.net](mailto:mtwillman@verizon.net)



*Information deemed reliable but not guaranteed and subject to change without prior notice.*



**P**ride of ownership abounds in this recently renovated and expanded arts & crafts home in Kensington. Every luxury amenity can be found in this 4-bedroom, 3-1/2 bath home in the highly desirable Garrett Park Estates community.

Enter the gracious foyer with hardwood floors leading to the inviting family room with stone fireplace and lots of windows. Gourmet kitchen with top-grade stainless steel appliances opens to breakfast nook, looking out on the large Trex deck and lovely private back yard. Gracious dining room with glass-and-mullioned pocket doors opening to the formal living room. Upper level bedrooms include cathedral-ceiling master bedroom suite with luxury bath, and 3 more large bedrooms plus large hall bath. Finished lower level offers large recreation room, guest room, and full bath, plus tons of storage space. Spacious yet homey!



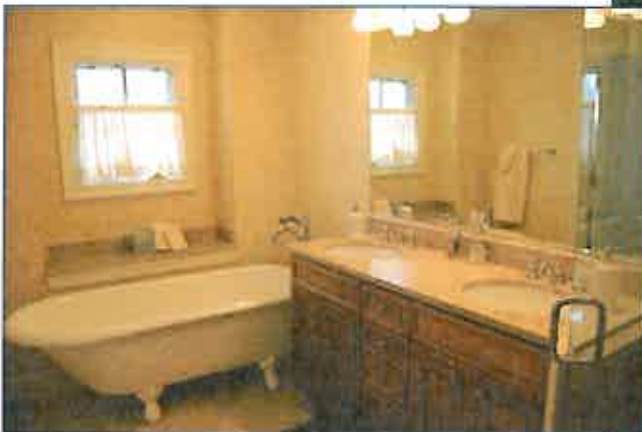


# Bright and Sunny

301-946-3900  
10410 N Kensington Pkwy, Suite 100  
Kensington, MD 20895  
Fax: 301-949-4245

**4913 Flanders Ave.,  
Kensington MD 20895**

Huge family room leads to breakfast room  
and kitchen. ▶



▲ Master bath with marble tiles and clawfoot tub;  
Master bedroom with cathedral ceiling. ▶



◀ Dining room filled with sunlight, with glass mul-  
tioned pocket doors leading to living room.



Large Trex deck overlooking lovely back yard. ▶

